

FILL-RITE DEF



FROM THE LEADER IN FUEL TRANSFER

***DEF / ADBLUE® PUMP
SYSTEMS & ACCESSORIES***

GR
GORMAN-RUPP
COMPANY



DF SERIES | DEF DISPENSING PUMP SYSTEMS

The new DF Series DEF pumps and systems from Fill-Rite provide quick, easy, and safe dispensing. With 8 GPM flow rates, your choice of AC or DC power, and all-in-one systems ready to go right out of the box, pumping Diesel Exhaust Fluid has never been easier.

Whether you pump from an IBC, tote, or drum, there is a DF series system for you. Options include mounting brackets, hoses, fittings, and nozzles with digital meters pre-attached at the factory. Best of all, it comes from Fill-Rite, so you know it is built for performance and durability. Take control of your DEF use; choose a DF Series system from Fill-Rite, the most trusted name in pumps and meters.

120V AC DF120N



	DF120N	DF012N
FLOW RATE	8 GPM / 30 LPM	
MAX. BYPASS	38 psi / 2.6 bar	
VOLTAGE	120V AC	12V DC
WETTED CONSTRUCTION	Nylon, EPDM, Santoprene®, Stainless Steel	
DUTY CYCLE	30 Min. ON / 30 Min. OFF	
COMPATIBLE FLUIDS	Water, Diesel Exhaust Fluid	
INLET / OUTLET	1" BSPP	
CONNECTIONS KIT (INCLUDED)	(2) 1" BSPP x 3/4" hose barb 90° elbows, (2) 1" BSPP x 3/4" hose barb straight fittings, (4) Worm gear hose clamps	

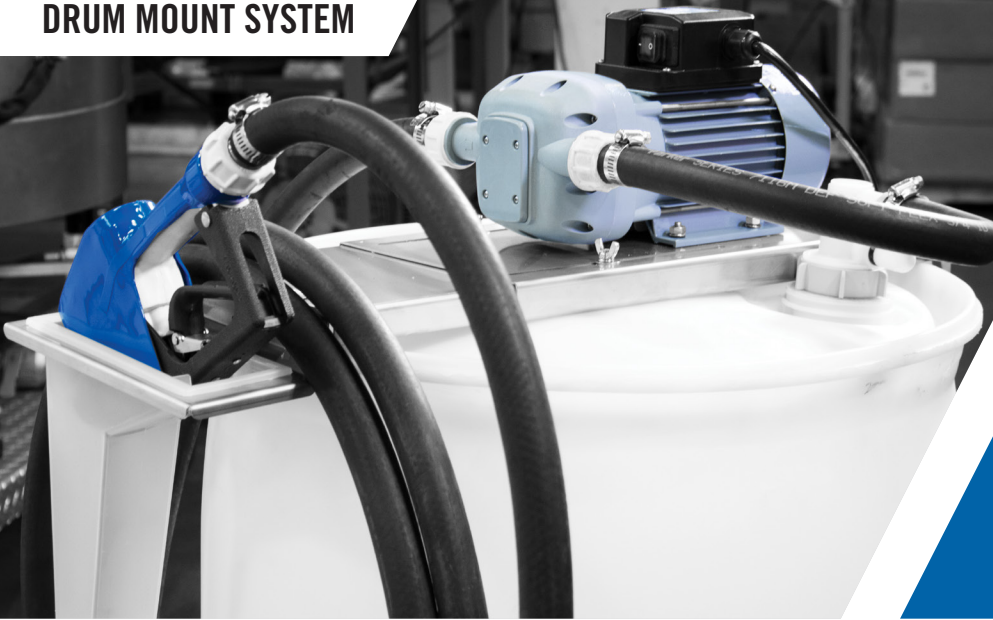
12V DC DF012N



PUMP FEATURES & BENEFITS

- **Rugged Multi-Diaphragm Technology**
Specifically designed for DEF / AdBlue® dispensing
- **Integral Pulsation Dampener**
Smooth flow at point of use
- **30-Minute Duty Cycle**
120V AC or 12V DC
- **Self-Priming to 6 Feet**
Saves time with quick fluid lift
- **8 GPM Flow Rate**
Ideal dispense rate for most tank sizes
- **EPDM Seals**
Designed, tested and proven specifically for DEF
- **Stainless Steel Exterior Hardware**
Ideal material for DEF / AdBlue®

DRUM MOUNT SYSTEM



120V AC SYSTEMS

	DF120CAT520	DF120CAN520-RP	DF120CAN520	DF120CMN520	DF120DAN520
Pump Voltage	120V AC	120V AC	120V AC	120V AC	120V AC
Bracket Type	Cage IBC	Cage IBC	Cage IBC	Cage IBC	Drum
Nozzle Boot & Bracket	Included	Included	Included	Included	Included
Turbine Meter	TT10PB	-	-	-	-
Nozzle Type	Automatic	Automatic	Automatic	Manual	Automatic
Micro Matic® RPV	Included	Included	-	-	-
5' Suction Hose	Included	Included	Included	Included	Included
20' Discharge Hose	Included	Included	Included	Included	Included
Connections	(2) 1" BSPP x 3/4" hose barb 90° elbows, (2) 1" BSPP x 3/4" hose barb straight fittings, (4) Worm gear hose clamps				



Auto Nozzle AC System, In-line Meter, RPV



Automatic Nozzle AC System, RPV



Automatic Nozzle AC System



Manual Nozzle AC System



Drum Mount AC System, Auto Nozzle

SYSTEM COMPONENT DETAILS

CAGE BRACKET

- Stainless steel
- Hangs on many types of caged totes
- High capacity hose bracket accommodates 20'

DRUM BRACKET (DF120DAN520 only)

- Stainless steel
- Securely mounts to 30 and 55-gallon drums

NOZZLE BOOT

- Keeps nozzle clean and free of debris
- Nozzle tip submerged in water stays clean
- Removable boot for easy clean-up
- Multiple secure mounting configurations

12V DC SYSTEMS



	DF012CAT520	DF012CAN520-RP	DF012CAN520	DF012CMN520
Pump Voltage	12V DC	12V DC	12V DC	12V DC
Bracket Type	Cage IBC	Cage IBC	Cage IBC	Cage IBC
Nozzle Boot & Bracket	Included	Included	Included	Included
Turbine Meter	TT10PB			-
Nozzle Type	Automatic	Automatic	Automatic	Manual
Micro Matic® RPV	Included	-	Included	-
5' Suction Hose	Included	Included	Included	Included
20' Discharge Hose	Included	Included	Included	Included
Connections	(2) 1" BSPP x 3/4" hose barb 90° elbows, (2) 1" BSPP x 3/4" hose barb straight fittings, (4) Worm gear hose clamps			



Auto Nozzle DC System, In-line Meter, RPV



Automatic Nozzle DC System, RPV



Automatic Nozzle DC System



Manual Nozzle DC System

HOSE

- 3/4" EPDM DEF rated

Nozzle

- Automatic or manual

TURBINE METER (CAT520 models only)

- +/- 1% accuracy
- 4-Digit display: ounces, pints, quarts, liters or gallons
- Factory calibrated, installed and tested
- Easy field calibration
- Replaceable AA batteries

MICRO MATIC® COMPOSITE DISPENSE COUPLER (RPV)

(CAT520 and CAN520-RP models only)

- Dispense from drum or IBC
- For use with either RSV or RPV 4-Key Container Valve
- Fast "Turn, Click and Go" connections
- Self-locking handle eliminates accidental disengagement
- Protects fluid purity by allowing dispense only

DF SERIES | DEF ACCESSORIES



FRDFA075A

- Automatic DEF nozzle
- Stainless Steel
- 3/4" BSPP connection



KITDFMN

- DEF Automatic metering nozzle
- In-line turbine meter
- 3/4" SS Hose barb connection w/ swivel



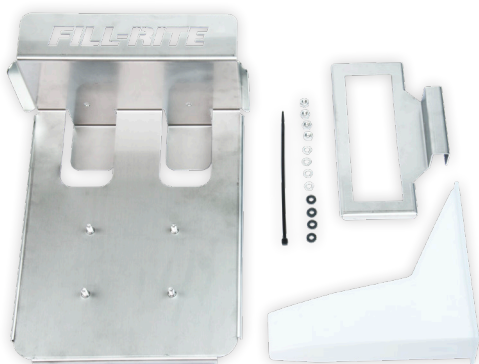
FRDFM075C

- Manual DEF nozzle
- Non-metallic
- 3/4" Hose barb connection



FRDFM075B

- Automatic DEF nozzle
- Non-metallic
- 3/4" SS Hose barb connection w/ swivel



KITDFCB

- FILL-RITE IBC/Tote bracket
- Stainless Steel construction including hardware
- Includes nozzle boot and reservoir



KITDFDB

- FILL-RITE Drum bracket
- Stainless Steel construction expands for 30 to 55 gallon drums
- Includes nozzle boot and bracket



KITDFNB

- Nozzle boot and bracket
- Removable boot for easy clean-up
- Keeps nozzle clean and free of debris



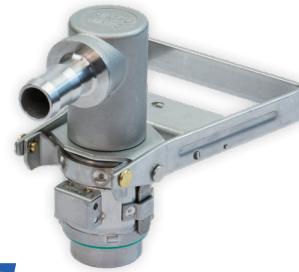
MMSS075EPV

- Micro Matic® Stainless Steel, EPV coupler
- 3/4" Horizontal hose barb connection
- For use with 3-key EPV container valves



MMNM075RPV

- Micro Matic® Non-metallic, RPV coupler
- 3/4" Horizontal hose barb connection
- For use with either RSV or RPV 4-key container valves



MMSS075RSV

- Micro Matic® Stainless Steel, RSV coupler
- 3/4" Horizontal hose barb connection
- For use with either RSV or RPV 4-key container valves



KIT180DTPS

- 55 Gallon drum drop tube
- 3/4" Horizontal hose barb connection
- Vented system



KITDFH20

- 20' EPDM suction hose 3/4 inch
- Bare ends for hose barb connection
- DEF rated



KITDFH05

- 5' EPDM suction hose 3/4 inch
- Bare ends for hose barb connection
- DEF rated



KITDFFK

- (2) 1" BSPP x 3/4" Hose Barb straight fittings with retaining nuts
- (2) 1" BSPP x 3/4" Hose Barb 90-degree elbow fittings with retaining nuts
- (4) SS worm gear hose clamps



FILL-RITE DEF

FRDEFBv.1

MADE IN
USA 
WITH GLOBAL MATERIALS

CUSTOMER SUPPORT: (800) 634-2695
TECHNICAL SUPPORT: (260) 747-7524

FILLRITE.COM

GR
GORMAN-RUPP
COMPANY